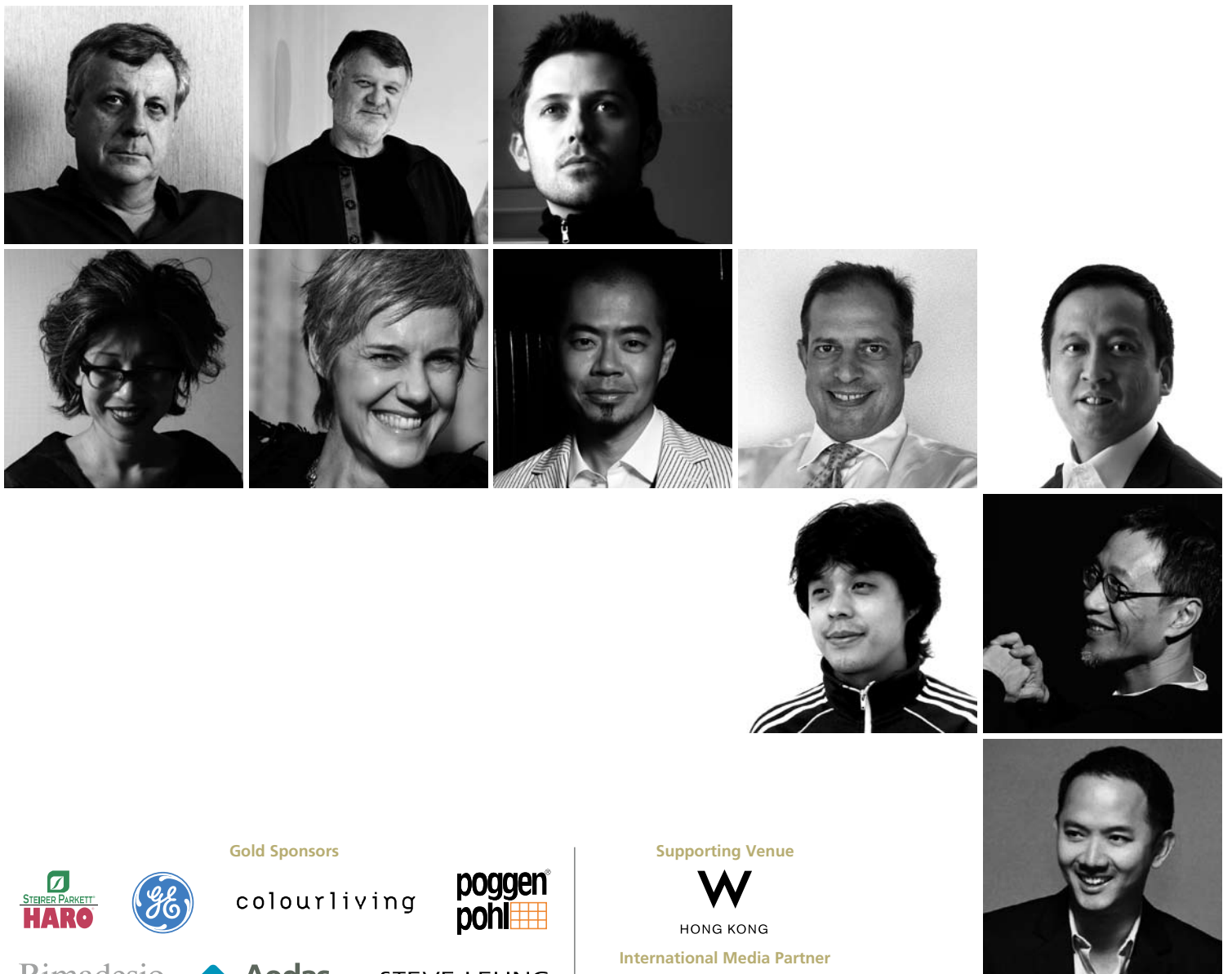


透視設計大賞

PERSPECTIVE AWARDS 2009

It's been a challenging year for the architecture and design industries, with budgets slashed and projects put on indefinite hold. The good news is that in reviewing this year's Perspective Awards entries, judges were unanimous in their assessment that there is still outstanding work being done in the face of adversity

今年，建築及設計業界面對嚴峻的挑戰，削減預算、工程項目無限期擱置等情況時有所聞。好消息是一眾評審一致認同本年度《透視設計大賞》的參賽作品水準優秀依然，創意的力量並未受到不景氣所影響



Gold Sponsors



colourliving



Rimadesio



STEVE LEUNG

Supporting Venue



HONG KONG

International Media Partner

International Herald Tribune



Best Architecture 專業組最佳建築作品一冠軍

Sponsored by Steirer Parkett Haro



NHDRO (neri&hu design and research office)
Project The Black Box — 88 Yuqing Road
What the judges said "Dignified architecture with a very good expression of the articulation and uses of the functional spaces. The building is well-scaled and seems appropriate to the street environment and the greenery. It has a comfortable transition from the street to the interior. The view box windows are nicely expressed both on the elevation and on the interior. It is an appropriate and well thought-out building."

如恩設計研究室
作品：The Black Box — 88 Yuqing Road
評語：「一幢莊嚴華貴的建築，結構呈現絕佳美感，也能充分善用室內空間。建築的比例完美，配合周邊街景與翠綠景致更顯相得益彰。室外到室內之間的過度毫不突兀，感覺自然。不論是從外看還是從內看，觀景一樣美麗。建築物的設計精準用心，一切皆恰如其份。」



Gerald Gutmann and Lyndon Neri



Best Hospitality Interior/Entertainment

最佳服務業/娛樂消閒空間一冠軍

Sponsored by GE Appliances Asia



NHDRO (neri&hu design and research office)

Project Bei Asian Restaurant

What the judges said "It is highly conceptual and tectonically/materially sophisticated, leading to an otherworldly quality. The use of metaphor was sensitive and not pretentious or over-wrought, while the sequence of spaces, from entryway to main dining to private rooms was well choreographed. The collateral (menu, signage) seemed holistic."

如恩設計研究室

作品：Bei Asian Restaurant

評語：「餐廳的設計極富創意，所用的材質和建構不落俗套，超脫塵俗的美感油然而生。表達手法方面，象徵法用得巧妙，不造作也不浮誇，從入口到主廳及私人房的編排更是俐落有致。其他細節如餐牌及指示牌都做到格調統一。」



Elaine Chan and Lyndon Neri





Best Interior Commercial/Office

最佳商業空間/辦公室一冠軍

Sponsored by Colourliving

su:b design

Project Shama Place

What the judges said "The juxtaposition of the substantial foyer relays a corporate integrity, coupled with the seamless and pure elements of the working spaces. The judicious use of Mondrian-like coloured sheets break up the spaces and bring an energy that intensifies the purity of palette. Overall, it is a seamless and clever use of space, light and colour that ensures a strong concept not lost in the translation and execution."

Denise Lau, Susanna Leung and Bun Ho



su:b design

作品：Shama Place

評語：「偌大門廳的並置式設計能突顯公司的形象，流暢及簡約的風格也符合辦公室的功能。設計師效法蒙德里安藝術風格，大膽起用各原色分割出不同空間，更能烘托簡單色調的純粹。設計師運用空間、燈光及顏色的手法非常聰明，能牢牢鎖住設計構思的重心，沒有迷失於創作及實踐的過程中。」



Kevin Mok and Anderson Lee

Best Interior Residential

最佳住宅一冠軍

Sponsored by Poggenpohl

Index Architecture

Project Ha Residence

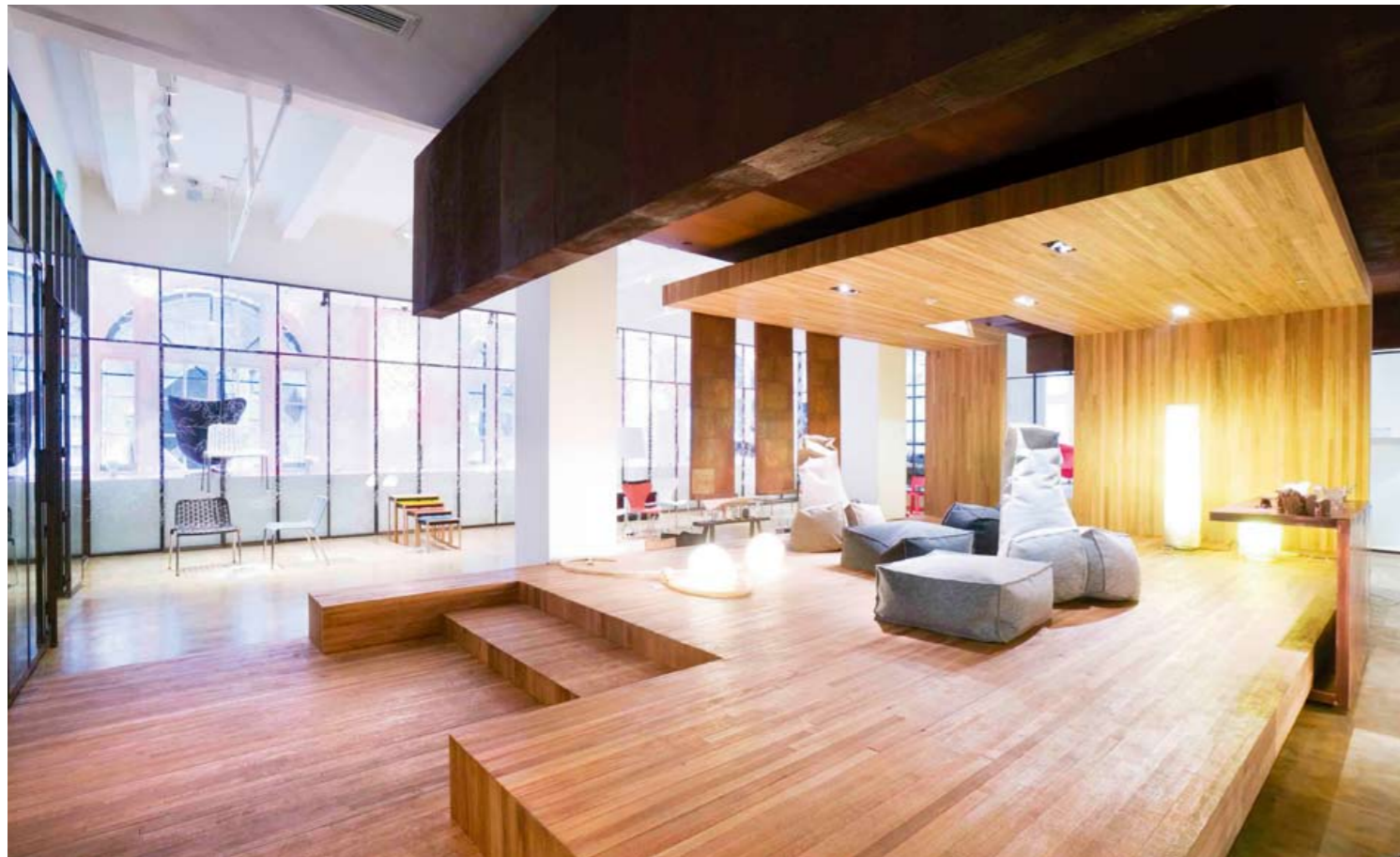
What the judges said "The big red volume turns the whole interior into an artwork into itself. The entire space gains a three-dimensionality rarely seen in interiors. From whatever angle one looks at it, it makes for a light, happy and colourful composition."

升建築

作品：Ha Residence

評語：「那整片的大紅使整個空間幻化成一件藝術品。房間上下展現出極佳的立體感，這在一般室內設計中實屬罕見。無論打從哪個角度看它，都可以感受到輕鬆、愉快及繽紛的色彩。」





Kiki Yau and Lyndon Neri

Best Interior Retail 最佳零售空間一冠軍

NHDRO (neri&hu design and research office)

Project The Reverse Courtyard — Design Republic Flagship Store

What the judges said "This space comprises both design focus as well as a strong command of design restraint. A simple solution, yet effective. The design is strong, cohesive and appropriate. The historic reference to a courtyard and its subsequent abstraction is much admired."

如恩設計研究室

作品：原始小屋 — 設計共和上海旗艦店

評語：「這個空間設計的焦點鮮明，成功駕馭設計上的限制。方案雖然簡單，但行之有效。設計給人的感覺強烈、和諧及恰當。參考合院的设计、結合歷史概念也讓人賞心悅目。」



Best Product Design

最佳產品設計一冠軍

Sponsored by Rimadesio



Gabriele Caprotti and Nils Neckel

Matthew Hilton

Project Tapas Chair

What the judges said "Chair and sentinel. Informality and respectability combined. There is a ghost Eames here, but it is very much an original design. The use of the wood grain and modelled shape of the seat structure communicates responsive comfort. There is a tilt of the 'cordobes' to traditional Spanish form — such as the upturned seat edge, the leg assembly. Less physical in white oak, the black walnut version speaks of its heritage. Tapas — a delightful small chair, versatile and easily transportable."

Matthew Hilton

作品：Tapas Chair

評語：「椅子與哨兵。隨意與端莊的混合體。設計透現著 Eames 的靈魂，卻是名副其實的原創。木紋板造的椅子，那精心模造出來的形態，舒適自在。那微翹的椅邊、合組椅腳與傳統西班牙椅子設計是求同存異。白橡木製的細緻精巧、黑胡桃木製的歷史感濃厚。Tapas 小椅靈巧多變，而且搬運簡便。」



Best Architecture

學生組最佳建築作品一冠軍

Sponsored by Aedas

Ho Ho Wai, Howie, University of Hong Kong

Project Speed — From Transport to Perception via Architecture

What the judges said "The stunningly fluid, highly dramatic structure suggests motion, as if a sudden change in the atmosphere caused the crystalline form to freeze mid-movement. It takes the best of the 21st century's steel-and-glass concept and coheses this into a structure in which aesthetics and function have equal priority."

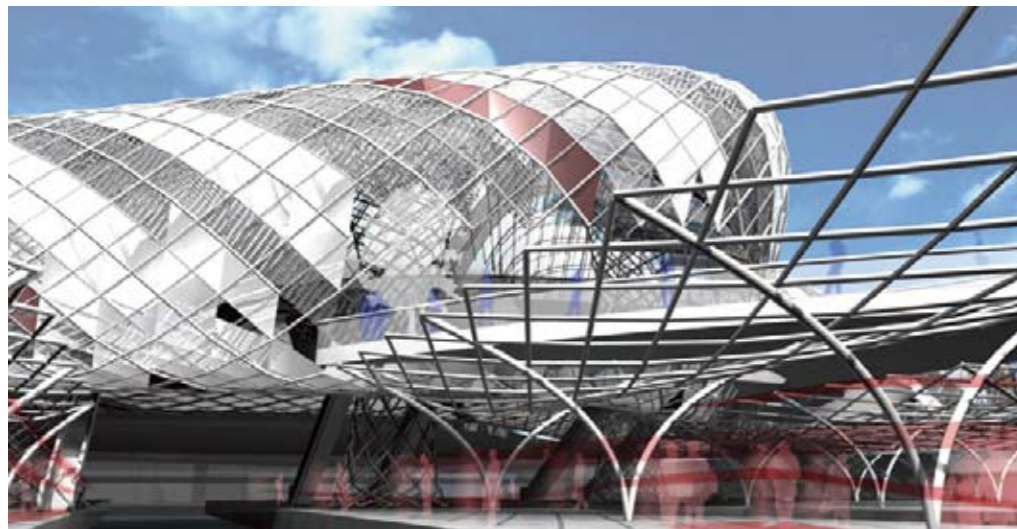
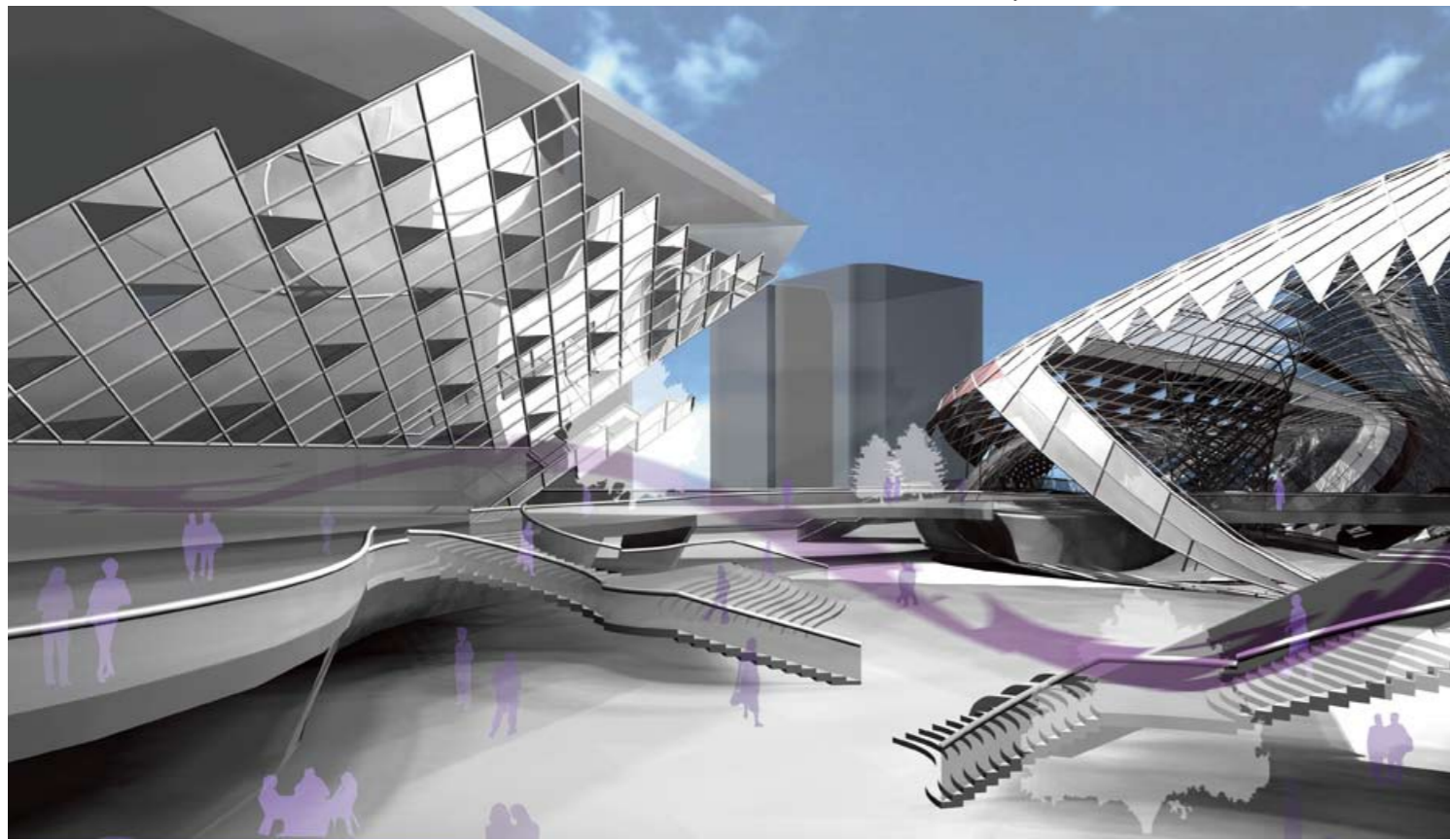
Ho Ho Wai, Howie, University of Hong Kong

作品：Speed — From Transport to Perception via Architecture

評語：「建築線條流暢優美，結構則滿載熱情，洋溢動感，彷彿是一尊因環境氣氛突變而倏忽凝固成的水晶體。設計揉合了廿一世紀最佳的鋼及玻璃概念，在美學及功能上的表現均完全兼顧。」



Kyran Sze and Howie Ho



Best Interior

學生組最佳室內設計一冠軍

Sponsored by Steve Leung Designers



Steve Leung and Cindy Zhang

Zhang Yiwei, Cindy, Hong Kong PolyU

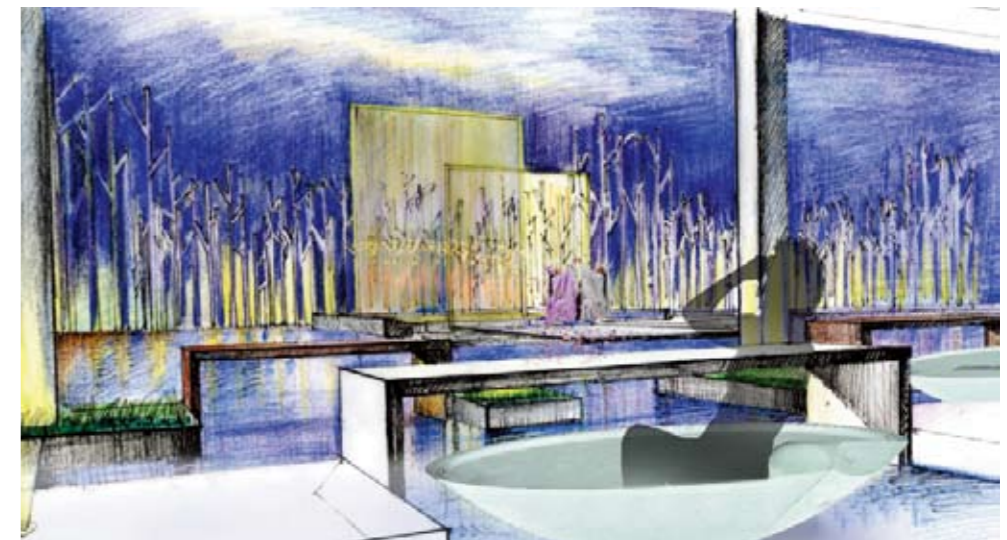
Project Floating Poetry: A Floating Leisure Space in Westlake

What the judges said "Interior becomes exterior, exterior moves interior in this innovative leisure garden plan. The scheme seems to be still at the conceptual stage; the circulation and connections, and relationship of the spaces can be explored further. The attractive illustrations communicate the connection between local culture and heritage with modern lifestyle demands."

Zhang Yiwei, Cindy, Hong Kong PolyU

作品：Floating Poetry: A Floating Leisure Space in Westlake

評語：「室內儼然室外，而室外環境又反過來牽動室內的氣氛，這個悠閒花園的設計創意新穎。設計構思仍然幼嫩，當中空間的陳設鋪排、彼此的連繫及關係尚待更深入的研究。繪圖精美，設計和諧揉合了本地文化、古蹟及現代生活需要。」





Certificate of Excellence: Best Architecture

專業組最佳建築作品 — 優異獎

Sponsored by Steirer Parkett Haro

Kon Design

Project Workshop versus Pavilion

What the judges said "A simple sketch of a building. Low-budget and unpretentious. A worthwhile effort to bring good design to industry. Good use of existing outdoor area. A very approachable building for the factory employees."

Kon Design

作品：Workshop versus Pavilion

評語：「輕描淡繪的建築物。經濟而且實而不華，盡顯設計師矢志做出好作品的用心。活用現有戶外空間，是工廠大廈員工理想的工作間。」



Gerald Gutmann and staff of Kon Design



Certificate of Excellence: Best Interior — Hospitality/Entertainment

最佳服務業/娛樂消閒空間 — 優異獎

Sponsored by GE Appliances Asia



Studioilse

Project Kettners

What the judges said "Incredibly inviting and welcoming atmosphere, exuding a casual sense of design that does not overpower. A contrast of 'old school' and contemporary influences and furniture is very well balanced, while the sustainable ethos (recycling of vintage furniture, wall panels) is very commendable. It offers a rich variety of spaces that provide an eclectic array of experiences, but which are yet tied in by a sense of holism."

Studioilse

作品：Kettners

評語：「空間氛圍出乎意料地舒適溫暖，帶點淡淡的悠閒。」學院風。與當代風傢具的對比強烈，卻濃潤有致，而且處處體現可持續精神（循環再用懷舊傢具、牆板）。空間層次感豐富，多種風格兼容並蓄，卻始終不離其宗。」



Elaine Chan and Nils Neckel

Certificate of Excellence: Best Interior — Commercial /Office

最佳商業空間/辦公室 — 優異獎

Sponsored by Colourliving



NHDRO (neri&hu design and research office)

Project Design Republic Office

What the judges said "Form, function and location blend perfectly here at the headquarters of a prominent design store in China, where a few featured, elements which work together to define the various working spaces."

如恩設計研究室

作品：設計共和辦公室

評語：「設計共和中國總部的設計在形態、功能及取址三方面配合得相當完美，某些別具特色的小節更有助勾勒不同工作空間的風格，應記一功。」



Denise Lau and Lyndon Neri

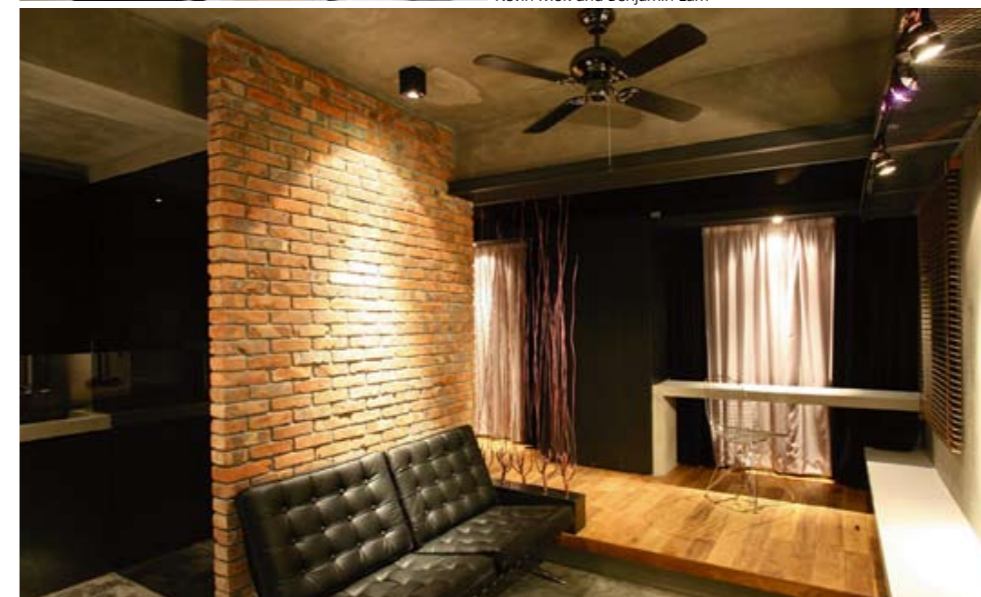


Kevin Mok and Benjamin Lam

Certificate of Excellence: Best Interior — Residential

最佳住宅 — 優異獎

Sponsored by Poggenpohl



MYDesigner

Project Renovation of an 'XS' Residential Apartment

What the judges said "The atmosphere in this flat is a daring but welcome antidote to the common 'spacey white' apartments. The subdued lighting, the dark walls and the somewhat rough brick wall lend this interior the cozy protection of a secret lair. Yet the mosaic tiles and other clean-cut elements, such as the kitchen and bathroom counters, give it a sophistication which clearly say that it is not really size that matters. The layout makes very good use of the limited space, where every function flows seamlessly into each other, but still has its own distinct 'corner'."

得獎單位：MYDesigner

作品：Renovation of an 'XS' Residential Apartment

評語：「不拘小節、大膽的設計，最能夠應付普遍單調雪白的住宅空間。暗暗的燈光、色澤深沉的牆及質地感原始的磚牆，營造了室內的私密感覺，舒適愜意。此外，設計師還應用馬賽克瓷磚及其他線條簡潔的配件，好像廚房及浴室的流理桌，設計細緻，印證了細小的空間也可設計得巧妙。房間佈局靈活運用有限的空間，將所有房間都順暢無礙地連接起來，卻仍保留有各自獨特的一角。」

Certificate of Excellence: Best Interior — Retail

最佳零售空間 — 優異獎



Andy Tong Creations

Project Mikiki Show Suite 2009

What the judges said "The design innovation within these interior spaces is clearly apparent. The solution comprises a series of complex and didactic spatial experiences that a clearly defined and represented. The use of colour, texture and juxtaposition of these elements is exemplary."

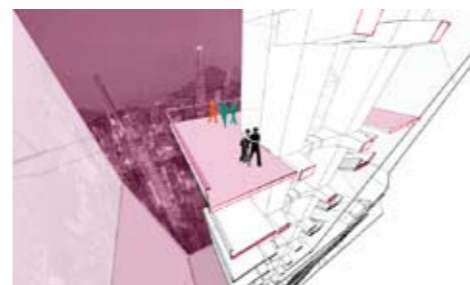
Andy Tong Creations

作品：Mikiki Show Suite 2009

評語：「這套室內設計意念創新之處顯而易見。它展示了一系列複雜而精妙的空間計算，清晰鮮明而且富代表性。其顏色運用、質感及各種元素配搭之佳堪稱示範作。」



Kiki Yau and Andy Tong



Student Category Certificate of Excellence: Best Architecture

專業組最佳建築作品 — 優異獎

Sponsored by Aedas

Stella Ho Wai Chong, University of Hong Kong
Project Schizophrenic City

What the judges said "Not just a skyscraper but a social and political commentary in which different parts of Hong Kong are brought together internally, representing the schizophrenic nature of the city. Apparent chaos and confusion is communicated via the form, while the external reflective glass panels encourage the people of Hong Kong to look at themselves and question the identity of the city."

得獎者：Stella Ho Wai Chong,
University of Hong Kong

作品：Schizophrenic City

評語：「這不只是一座摩天大廈，更是一場社會及政治評論，將香港上下階層聚集一處，呈現都市分裂的面貌。大樓的結構體現了紛爭及混亂，外在反光玻璃幕牆則鼓勵香港市民反思自己，思索這都市的身份。」



Kyran Sze and Stella Ho

Certificate of Excellence: Best Product Design

最佳產品設計 — 優異獎

Sponsored by Rimadesio



NHDRO (neri&hu design and research office)

Project Lacquer Object — Donut

What the judges said "This is a handsome example of less is more; a restrained take on tradition. Its simple shape evokes thoughts of a smooth and cherished pebble that nestles into the hand. This is a very good example of how delving into the beauty of the past becomes a catalyst to design a new, functional and modern object. Its elemental inside/outside nature and the colour palette invites user experimentation to create an 'art form'."

如恩設計研究室

作品：Lacquer Object — Donut

評語：「簡約之美、傳統內斂的優秀示範。簡單的形狀，讓人聯想起手感軟潤光滑的小卵石。這作品闡述了舊設計的美如何催生出今天創新、實用又時尚的新設計。它內在及外在的特質以及其色調運用，都彷彿邀請用家親自體驗藝術創作的過程。」



Gabriele Caprotti and Lyndon Neri



Steve Leung and Lam Wai Wa

Student Category Certificate of Excellence: Best Interior

學生組最佳室內設計 — 優異獎

Sponsored by Steve Leung Designers

Lam Wai Wa, Hong Kong Design Institute
Project Guest House

What the judges said "The approach is straightforward and the design intention is clear. The site context is considered. The designer made good use of internal space as community space."

得獎者：Lam Wai Wa, Hong Kong Design Institute

作品：Guest House

評語：「手法直截了當，設計意念清晰。建築物所在地的環境脈絡也考慮到了。設計者匠心獨運，靈活善用室內空間作公共空間之用。」

